

Spring 2021 Bulletin

Atlantic Gold in the Community

Atlantic Gold is a proud supporter of community activities and groups. Below are some of the important events we've recently partnered to support.

 Share  Tweet  Forward

Historic Tailings Cleanup: Protecting Our Wetlands

Partnership



Dr Linda Campbell, researcher with Saint Mary's University's Department of Environmental Science.

Saint Mary's University partners with St Barbara on remediation of historic mine tailing in wetlands

St Barbara is excited to announce a five-year partnership with Dr. Linda Campbell of Saint Mary's University, a leading scientist in historic mine tailing remediation. The strategic partnership and financial investment between St Barbara and Dr. Campbell will help advance world leading research that has the opportunity to impact local and global environments.

Dr. Campbell and her team are currently working on ways to remediate historic mine tailings sites by using proven expertise from previous studies. The new strategy is designed to be low cost and support the natural recovery of wetlands and shallow water environments.

At St Barbara, we use our five guiding principals to be a successful, leading, and growing gold company. Two of these

are: respecting the environment and creating stronger communities. This strategic partnership exemplifies these principals.

At St Barbara, respecting the environment means operating at the highest environmental standard in the present time and supporting and assisting in the remediation of historical mine sites that existed long before the environmental rules and regulations we have today.

Creating stronger communities is important in the direct communities we operate in, as well as the larger provincial, national and global communities we belong to. Dr. Campbell's research has the opportunity to benefit communities both close to home and abroad.

We look forward to sharing progress updates in the future from Dr. Campbell and her team.

You can find out more about Dr. Linda Campbell's work by clicking [here](#).

Moose River Gold Mines Museum

Heritage

The small rural community of Moose River is renowned for its gold mining history. Built following the discovery of gold in the 1870's, the mine gained international attention in 1936 when an underground cave-in trapped three men 43 meters below for eleven days. The event drew medical personnel, journalists, and rescue workers from across Nova Scotia to the scene. The world was captivated as radio was first used for live reporting broadcasting to 60 stations across Canada and 650 in the United States, reaching an estimated 100 million listeners. This past Easter was the 85th anniversary of the cave-in.

When the gold deposit was thought to be depleted, workers moved on and the community's population shrank. Families connected to the rescue however, continue to preserve the stories and keep the artefacts of the past mining history at The Moose River Gold Mines Museum, a small museum located close to the entry of the present-day Touquoy Mine. The events of the rescue are commemorated with a provincial park, a cairn memorial, and the museum repurposed from the old community schoolhouse.

the archives of the museum has been discovered. We have collected and archived tools, boots, horseshoes, and a mine cart which was found in the Magill Mine at the level below the cave-in.



A mine cart from previous shaft mining at Moose River Gold Mine is placed on the grounds of the Moose River Gold Mine Museum. Photo Credit: Moose River Gold Mine Museum.

The museum is dedicated also to the community that sprang up around the gold mine. We have transplanted flower bushes from an old home to the museum's ground's and in the spring will make planter boxes out of mining timbers and local stone.

Visitors to the museum can access the public look-off into the active Touquoy pit. From there the adits (horizontal passages leading



Heritage plantings from the early community built up around the mine are replanted at the Moose River Gold Mine Museum grounds.

The museum is one of Atlantic Gold's earliest community partners and serves to educate the public on local mining history. Historic maps of underground shafts and drifts kept at the museum are vital for mine planning, and Atlantic Gold continues to update the knowledge base of these workings whenever new discoveries of old workings are found. From these underground workings a new collection of artifacts for

into the mine for drainage) of the Magill mine, where the men were trapped, are exposed. Those miners experiences, and the struggle and determination it took to reach them becomes conceivable from this view. When the workings were uncovered, a pipe 1 ½ inches was found, matching the dimensions and location of the rescue pipe used to communicate with and feed the trapped men. This has been returned to the museum and a section will be restored to the memorial cairn.

The museum is open July 1, 2021 to August 31, 2021 from 10am to 4pm daily. For more information please contact Betty Belmore on 902-384-2484 or bbelmore@ns.sympatico.ca.



Members of The Moose River Gold Mine Museum Society and daughters of rescue worker, Bernard Belmore, Betty Belmore and Kathy Didkowski with a section of the rescue pipe. Use with permission from B Belmore and K Didowski.

Community Youth Mentorship Outreach

Atlantic Gold prides itself on making a positive impact in the communities that we work in, creating opportunities for employment and prosperity in rural Nova Scotia. For youth in our rural communities, exposure to careers in the mining industry and education paths to these careers will have a positive impact for a lifetime.

For the local high school, we prepared separate informative presentations for students in the O2 (Options and Opportunities program) class, students interested in the skilled trades and the senior chemistry class. These presentations connected students' academic curriculum to our operation, covering the extraction process and measures for environmental protection and

Since the development of the Touquoy Mine, surrounding communities have been afforded many new and diverse occupational and training opportunities. As well, experienced mining professionals have either started new lives or returned home to Nova Scotia for the newly available employment opportunities created by Atlantic Gold. With this diverse work force, we proudly partner with local organizations to mentor youth and foster awareness of training, education, and work opportunities in mining and beyond.

By working with communities we are able to directly communicate St. Barbara's values as we strive to help our communities to thrive, grow, and prosper and to build meaningful relationships with them. We are especially proud to have sent our female industry role models to discuss careers in STEM and skilled trades with girls in the ninth grade with the non-profit group Techsploration's events, and organized site tours for local high school students.

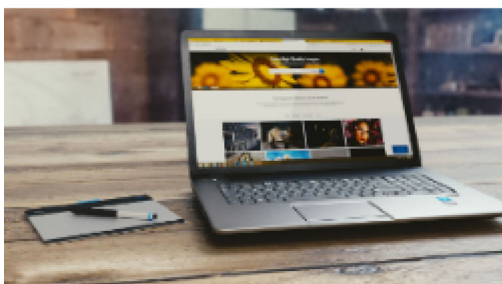
safety and mining staff answered questions from students. O2 teachers have reported that we have successfully answered the common question of "when am I ever going to use this?" while informing them about rewarding career paths that are possible here in Nova Scotia.

Through the Covid-19 crisis, we remained connected to fill in the gap left behind by in-person outreach. We delivered interactive activities to virtual summer campers with our neighbors in Camp Kidston, where the kids operated their own mine and were rewarded for the reclamation of their land represented by a chocolate chip cookie.



Atlantic Gold's Projects

Planning, developing, building, operating and reclaiming a mine is a complicated and technical process. In this section, we provide information about the stages of our projects.



Becoming Carbon Neutral by 2025

Environment

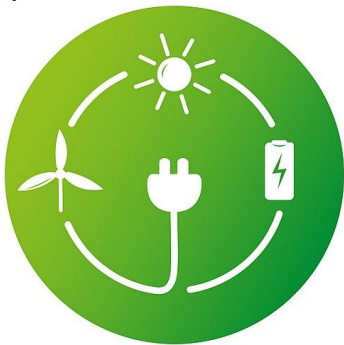
Atlantic Gold has committed to carbon neutrality by the year 2025. The company has already begun work to incorporate solar and battery storage at its Moose River - Touquoy

St Barbara, as a whole has a commitment to respecting the environment and being a leader in sustainability. Business-wide there are targets for emission reduction as well as

Mine with the incorporation of solar and battery storage technology. Last June, the company installed a 16-kilowatt-generating solar assembly at Moose River.

Site Services Supervisor Craig Ross stated that the current systems used in the mine have a very large power draw. By pushing alternative energy sources as far as we can, we can try to offset that draw from the main power grid. Said Craig Ross, "It's the right thing to do".

a company wide commitment to being net zero by 2050.



Environmental Impact Assessment Process	Accountability
--	-----------------------

Environmental Assessment Process



13

Beaver Dam Public Engagement

Consultation

Engagement, often referred to more generally as public participation, is important to discover concerns and risks, resolve problems, create a shared understanding with local stakeholders and rightsholders, and build trust around projects that may be controversial. Engagement can also

help communities and stakeholders take advantage of and build upon opportunities that the mine project may present. Atlantic Gold is committed to working with stakeholders and rightsholders throughout the Environmental Assessment process and mine life.

Comprehensive and meaningful engagement helps companies to anticipate potential concerns and mitigate negative impacts to the greatest extent possible. The very act of listening to stakeholders demonstrates openness and allows a relationship to develop, creating an ongoing cycle of communication. By listening to stakeholders, the project becomes better.

Atlantic Gold is seeking to permit, construct and operate an open pit gold mine in Marinette, Nova Scotia. This proposed project will include a haul road between the Beaver Dam Mine Site and the Touquoy processing facility. The haul road will primarily be on existing forestry roads and will be near the community of Mooseland. Although not as populated or close to the haul road or Beaver Dam Mine Site as the community of Mooseland, this plan also identifies Marinette, Moose River, Pleasant Valley and Sheet Harbour as stakeholder communities (Figure 1).

Atlantic Gold began stakeholder consultations for Beaver Dam in advance of the June 12, 2017 submission of the EIS to the Canadian Environmental Assessment Agency (CEAA), now referred to as the Impact Assessment Agency of Canada (IAAC) for the Beaver Dam Mine Project (the Project). On February 19, 2019 Atlantic Gold submitted a Revised Environmental Impact Statement (EIS) (AMNS 2019) which detailed engagement activities to that point. Since May of 2020, Atlantic Gold has been actively engaging with stakeholders to provide project updates and identify any emerging areas of concern.

Recreational usage of the area in and around the haul road emerged as an important issue. Through recent consultations with ATV clubs, the local community and other recreational users, the lakes, forests and trails are important to the way of life for many. There are important recreational fishing spots, camps and trails that connect communities. Atlantic Gold is working to find ways of continuing to provide the access to these important recreational lands.

To gain further information from the local community, has worked closely with the residents of Mooseland. Atlantic Gold staff went door to door to speak to people in this community, held small meetings and circulated to all mailbox holders a Plain Language Summary of the Beaver Dam Mine Project.

Atlantic Gold will continue to engage with stakeholders over the life of the Beaver Dam Mine Project. More information will be coming soon about engagement opportunities.

INFORMATION ABOUT ATLANTIC GOLD'S MINING PROJECTS

IN EACH NEWSLETTER, WE PROVIDE UPDATES ON ATLANTIC GOLD'S ONGOING PROJECTS.

Moose River Mine

At the end of May, Atlantic Gold hosted a virtual EA Information session on the proposed project changes at the Moose River Mine site. Attendees had the opportunity to hear from a panel of experts and ask questions about the project changes.

Production at the Moose River Mine continues to meet target and the

Beaver Dam

The Environmental Impact Assessment for Beaver Dam is being revised and will be re-submitted in Q1, 2021. The revised EIS will include the results of recent engagement activities with the local community, stakeholders, Indigenous communities and landowners. Some technical reports have been updated in response to

mine has continued to operate safely though the third COVID-19 wave.

Information Requests from the regulator.

Fifteen Mile Stream

The Fifteen Mile Stream Environmental Impact Statement will be submitted in February 2021. Once the regulator has reviewed the EIS for conformance to the Project Description, the EIS will be posted on the Impact Assessment Agency of Canada (IAAC) website and a public comment period will open. Atlantic Gold has been focused on preparing a complete and comprehensive EIS for the regulators to review.

Cochrane Hill

With the recent decision regarding Archibald Lake, Atlantic Gold is able to continue with the necessary studies and analysis to prepare a complete Environmental Impact Statement to IAAC. The office in Sherbrooke continues to be active, with over 115 visitors to the office since it opened. Atlantic Gold understands that there are many questions regarding the mine project, and we invite anyone to drop into our office to talk with us.

COVID-19 Notice regarding the Sherbrooke Office

Our Sherbrooke Office is currently closed due to the growing case numbers of COVID-19. To contact us during this time, please call 902-391-4653 or email communityrelations@atlanticgold.ca





Copyright © 2021 Atlantic Gold
All rights reserved.

Our email address is:
communityrelations@atlanticgold.ca

Want to change how you receive these emails?
You can update your preferences or unsubscribe from this list.